

B₊labs Waste Management Guide

Waste Disposal Categories

B₊labs Waste Management

1. Hazardous Waste
2. Glass
 - Non-Biohazard
 - Empty
3. Recycling
4. Trash
5. Biohazardous/Infectious
6. Chemicals (Non-hazardous/Expired or no longer used)
7. Universal Waste

Liquid Chemical Waste

B₊labs Waste Management

- **Hazardous Chemical Waste**
- Contact B₊labs for carboy container



Caustics

B₊labs Waste Management

- Neutralization Tank – Neutralized before release
 - Pour acid or base material or other diluted down lab sinks with water flow
- DO NOT POUR
 - Other chemicals unless approved by B₊labs



Glass (Non Contaminated)

B+labs Waste Management

- Lab-grade glass
- Broken glass



Recycling

B+labs Waste Management

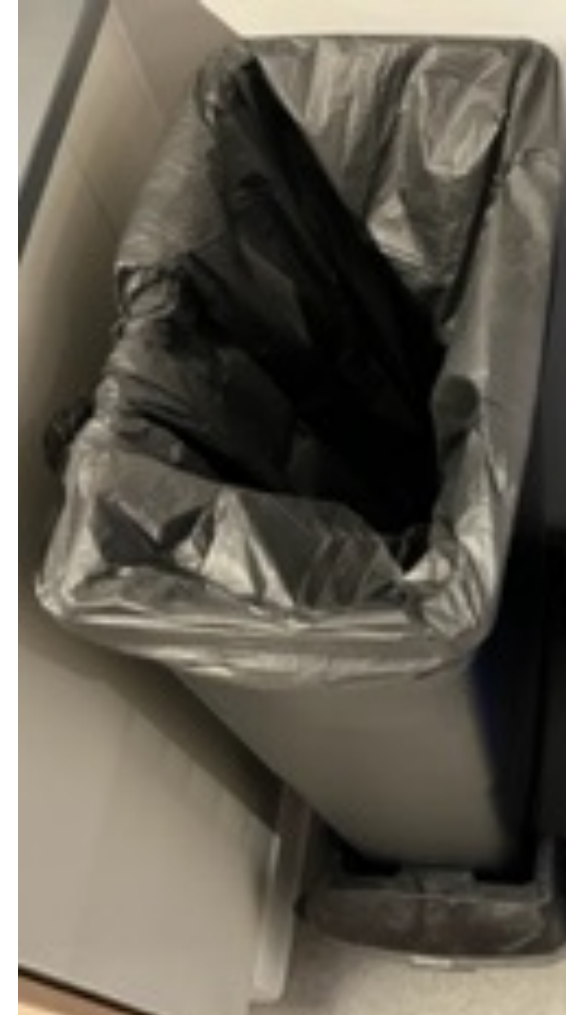
- Blue Receptacles
 - Single Stream
 - Not severely food contaminated



Trash

B₊labs Waste Management

- Black Bags – Regular Trash



Biohazard/Infectious Waste

B₊labs Waste Management

- All waste must be placed in red containers.
- All larger containers must be lined with a red bag.

Needle/Sharp “Sharps”



**Contaminated
Pipettes / Puncture
Potential Items**



**BioHaz Contaminated
or “looks”
biohazardous**



**Small/Needle biohaz
sharps container -
Place into larger
biohaz container**



Chemicals (Expired / No longer Used)

B₊labs Waste Management

- Surplus Chemicals & Expired
- Contact B₊labs for inclusion into “Lab Pack” disposal



Universal Waste

B+labs Waste Management

- Dispose into containers in Waste Room

Universal

- Heavy Metal
- EPA Registered Pesticides (including Germicides)
- Electronic
- Batteries
- Bulbs

