

Printer Management and Conference Rooms



Printer Management

Connect to a printer - Open **Control Panel**, select **Devices and Printers** and **Add a printer**. Select the printer you want to connect to and install. A few windows will pop up as your PC adds the printer. The install is complete once the print queue displays on your screen.

Remove an old printer - Open **Control Panel** and select **Devices and Printers**. Under **Printers and Faxes** right click on the printer you wish to remove and select **Remove device**.

Set a default printer - Open **Control Panel** and Navigate to **Devices and Printers**. Under **Printers and Faxes** right click on the printer you wish to set as default and select **Set as default printer**.

Secure Print

In order to have secure print options you will need to download and install the Canon DX C5860i print driver. We recommend using the PCL6 driver found [here](#).

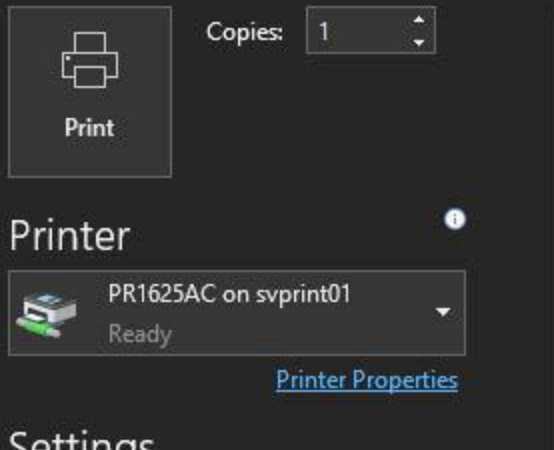
When going to **Control Panel, Devices and Printers**:

- Right click on the printer you want to change the settings and select **Printer properties**
- Select the **Advanced** and under driver. If the driver is already installed you can select the driver dropdown and select the **Canon Generic Plus PCL6 driver**. If you do not have the PCL6 driver as an option you can select **New Driver...hit Next, Have Disk...**, browse to the driver install you downloaded earlier and select the INF file and press **OK**. Press **next** and **finish** to add the PCL6 print driver.

How to print a document secured by a PIN (Secure Print):

<https://support.usa.canon.com/kb/index?page=content&id=ART165278>

Print



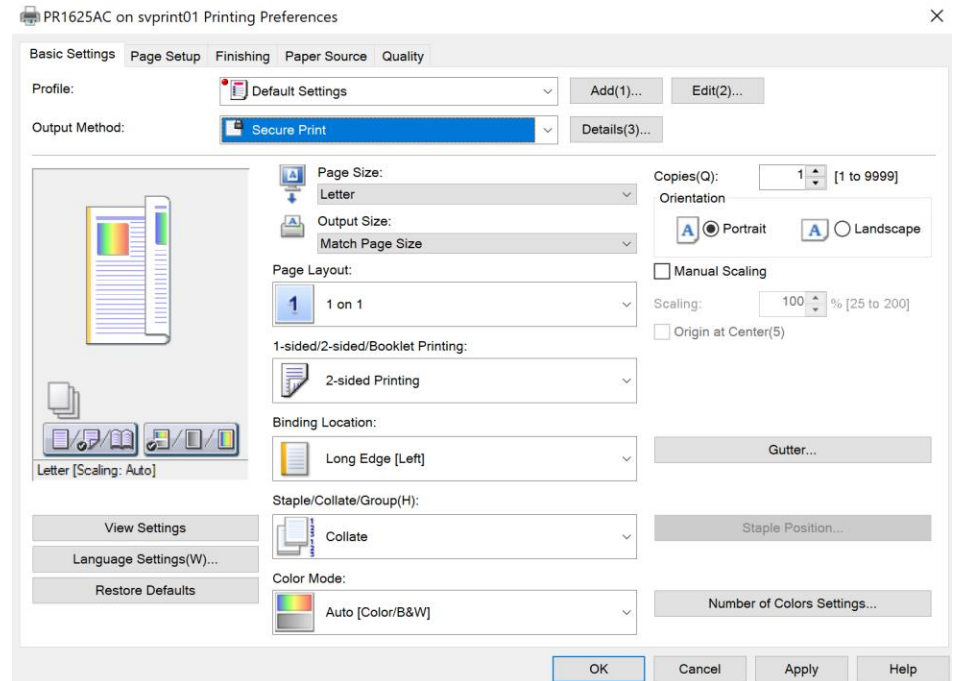
At Your Computer

1. Click **File**, then **Print**.
2. Select from the dropdown the printer of your choice.
3. Click **Printer Properties**:

Go to the Canon Printers

...ly print
...er. The user
...assword of their
...ted to enter it at
...print.

4. On the **Basic Settings** tab, change the **Output Method** to - **Secure Print**.

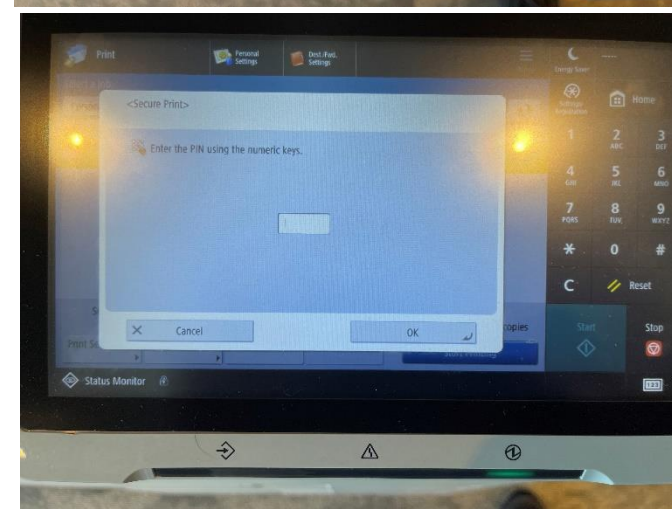
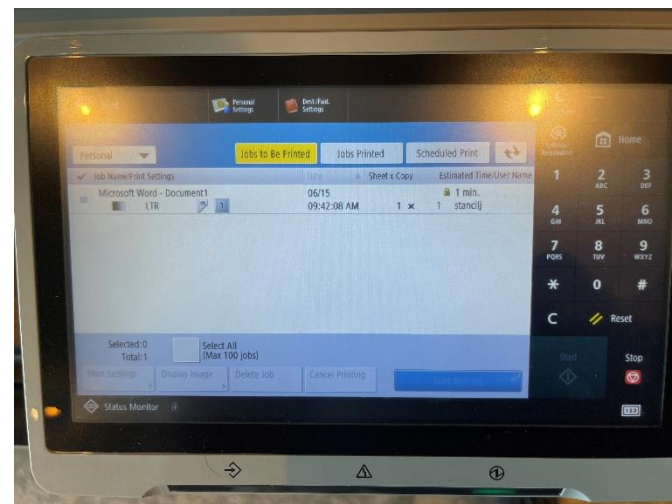
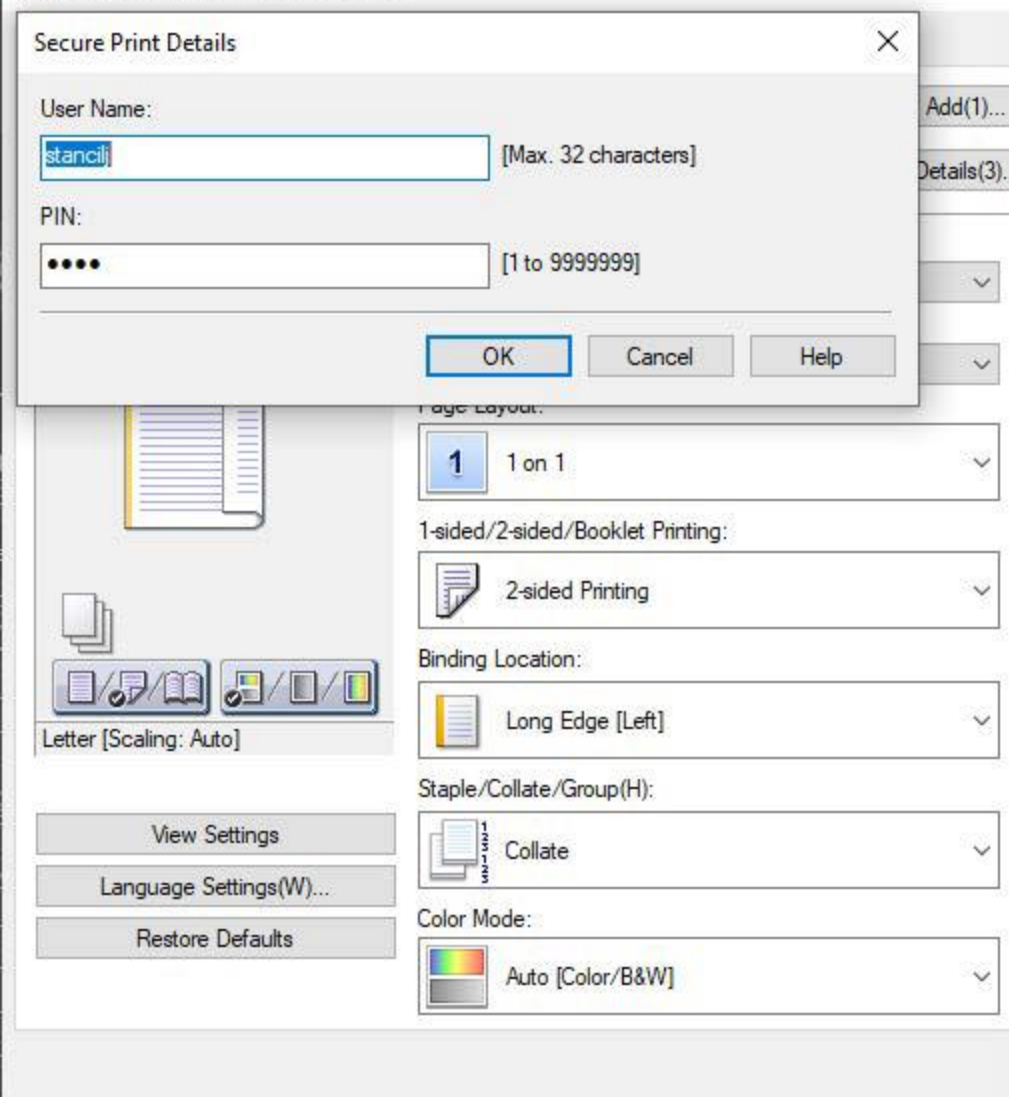


5. The first time you use this feature it should ask for an ID/Password for retrieving the document at the copier.
6. Subsequent secure prints will default to using the same ID/Password you originally chose.

Non Printers

At the Copier

1. Select **Print** from the Home screen
2. Tap on your print job
3. Enter your secure pin and press **OK**



8. Click **OK** then **OK** to print.