

B₊labs Waste Management Guide



Waste Disposal Categories

B₊labs Waste Management

1. Hazardous Waste
2. Glass
 - Non-Biohazard
 - Empty
3. Recycling
4. Trash
5. Biohazardous/Infectious
6. Chemicals (Non-hazardous/Expired or no longer used)
7. Universal Waste

Glass (Non Contaminated)

B+labs Waste Management

- Lab-grade glass
- Broken glass



Recycling

B+labs Waste Management

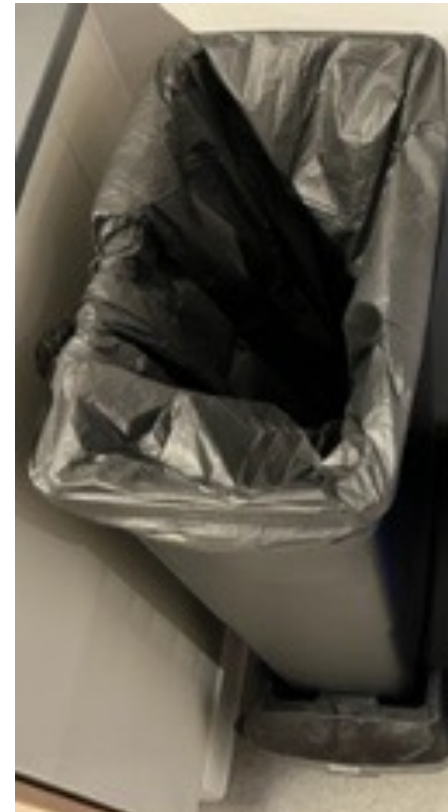
- Blue Receptacles
 - Single Stream
 - Not severely food contaminated



Trash

B₊labs Waste Management

- Black Bags – Regular Trash



Biohazard/Infectious Waste

B₊labs Waste Management

- All waste must be placed in red containers.
- All larger containers must be lined with a red bag.

Needle/Sharp “Sharps”



**Contaminated
Pipettes / Puncture
Potential Items**



**BioHaz Contaminated
or “looks”
biohazardous**



**Small/Needle biohaz
sharps container -
Place into larger
biohaz container**



Biohazard/Infectious Waste

B₁ labs Waste Management

- **Liquid Waste**

- Procedure:

- Bleach disinfection

- Effectiveness and EPA Approval: Bleach, a sodium hypochlorite solution (NaOCl), is a broad-spectrum disinfectant that is an effective disinfectant for enveloped viruses (e.g. HIV, HBV, HSV), vegetative bacteria (e.g. Pseudomonas, Staphylococcus, and Salmonella), fungi (e.g. Candida), mycobacterium (e.g. M. tuberculosis and M. bovis), and non-enveloped viruses (e.g. Adenovirus and Parvovirus). E.g. Austin A1 mercury-free bleach and Clorox bleach EPA registration numbers are 1672-20004 and 5813-50, respectively.
 - Recommended Personal Protective Equipment:
 - Lab coat
 - Latex or nitrile gloves
 - Safety glasses
 - Concentration:
 - The appropriate concentration of sodium hypochlorite for disinfecting liquid BL1 and BL2 waste, e.g. supernatants from cell culture, is 5000 ppm, approximately 0.5%. Household bleach is 5.2 - 6.1 % sodium hypochlorite; therefore a 1:10 (v/v) dilution of bleach to liquid biological waste is appropriate.
 - Procedure:
 - All liquid waste should be collected in a final concentration of 10% bleach with a contact time of at least 20 minutes prior to disposal. After 20 minutes of contact, disinfected liquid waste can be disposed down the drain.

Chemical Waste

B+labs Waste Management

- What is a hazardous Waste?

<https://www.epa.gov/hw/defining-hazardous-waste-listed-characteristic-and-mixed-radiological-wastes#react>



Search EPA.gov



Environmental Topics ▾

Laws & Regulations ▾

Report a Violation ▾

About EPA ▾

Hazardous Waste

CONTACT US

Hazardous Waste Home

Learn the Basics of Hazardous Waste

Hazardous Waste Management

Generation

Identification

Definition of Solid Waste

Exclusions

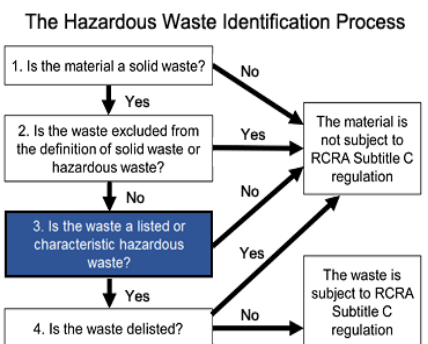
Characterization

Delistings

Transportation

Defining Hazardous Waste: Listed, Characteristic and Mixed Radiological Wastes

A solid waste is a hazardous waste if it is specifically listed as a known hazardous waste or meets the characteristics of a hazardous waste. Listed wastes are wastes from common manufacturing and industrial processes, specific industries and can be generated from discarded commercial products. Characteristic wastes are wastes that exhibit any one or more of the following characteristic properties: ignitability, corrosivity, reactivity or toxicity.



Liquid Chemical Waste

B+labs Waste Management

- **Hazardous Chemical Waste**
 - All Hazardous Waste must be discarded per the regulations.
 - Containerize materials.
 - Do not store incompatible materials together.
 - The contents of the container must be identified on the container.
 - "Company Name"
 - "Hazardous Waste"
 - "Content(s)"
 - Discard of containers when $\frac{3}{4}$ full.
 - "P-listed" empty containers must be disposed of as Hazardous Waste.
 - Carboy containers are available from B+labs.



Caustics

B₊labs Waste Management

- Neutralization Tank – Neutralized before release
 - Pour acid or base material or other diluted down lab sinks with water flow
- DO NOT POUR
 - Other chemicals unless approved by B₊labs



Chemicals (Expired / No longer Used)

B₊labs Waste Management

- Surplus Chemicals & Expired Materials.
- Contact B₊labs for inclusion into “Lab Pack” disposal



Universal Waste

B+labs Waste Management

- Dispose into containers in Waste Room

Universal

- Heavy Metal
- EPA Registered Pesticides (including Germicides)
- Electronic
- Batteries
- Bulbs

